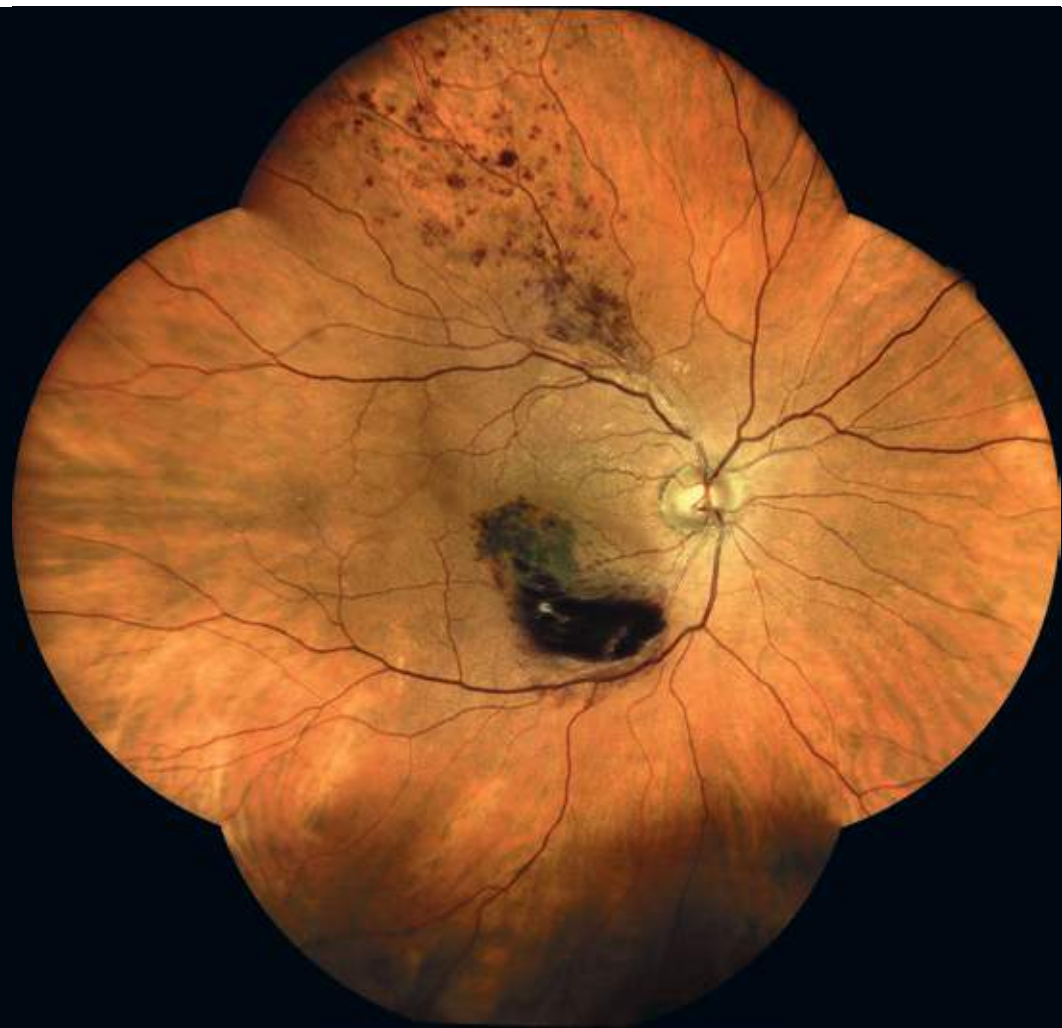


iCare EIDON Family



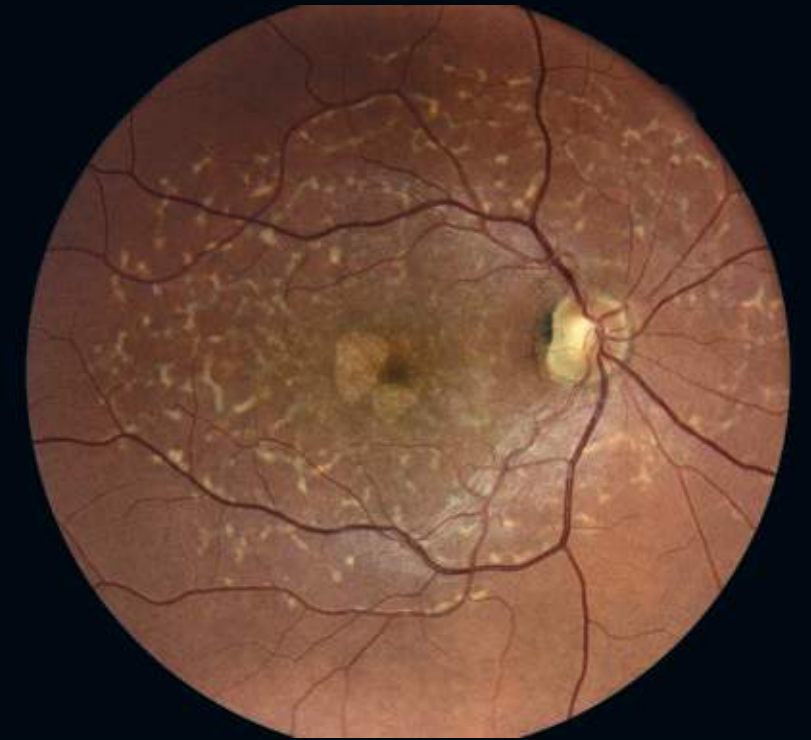
**Unsurpassed widefield
image quality**

For better perception **icare**



The TrueColor Confocal Technology

iCare EIDON Family combines a confocal optical engine with a white light LED source - which includes the entire visible spectrum of light - to illuminate the retina and to capture TrueColor fundus images characterized by colors close to reality.



iCare EIDON Family Unsurpassed widefield image quality

iCare EIDON Family is a family of fundus imaging devices designed to provide ultra-high resolution widefield images. iCare EIDON Family is composed of three models, iCare EIDON, EIDON AF and EIDON FA, to serve different needs with a complete suite of imaging modalities.



TrueColor Confocal Technology, with white LED, promotes detailed **90° retinal pictures** with **pupils** as small as **2.5 mm** and scanning **through cataract**.



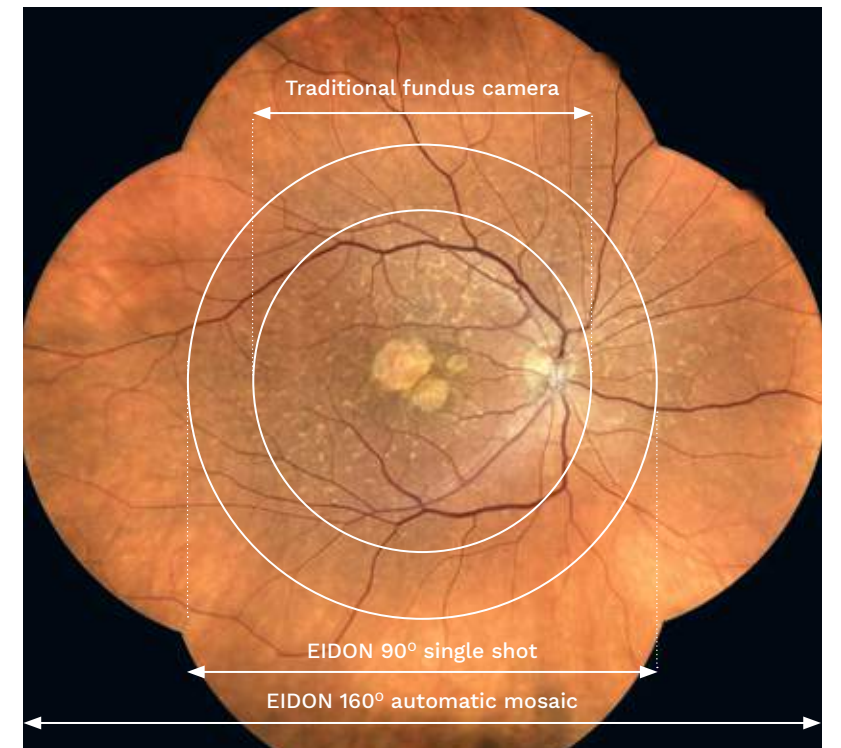
Ultra-high resolution widefield imaging provides both detail-rich and widefield views of the retina.



Flexibility in operational modes, **from fully automatic control to manual operation**, requires minimal staff training, speeding up the examination time.

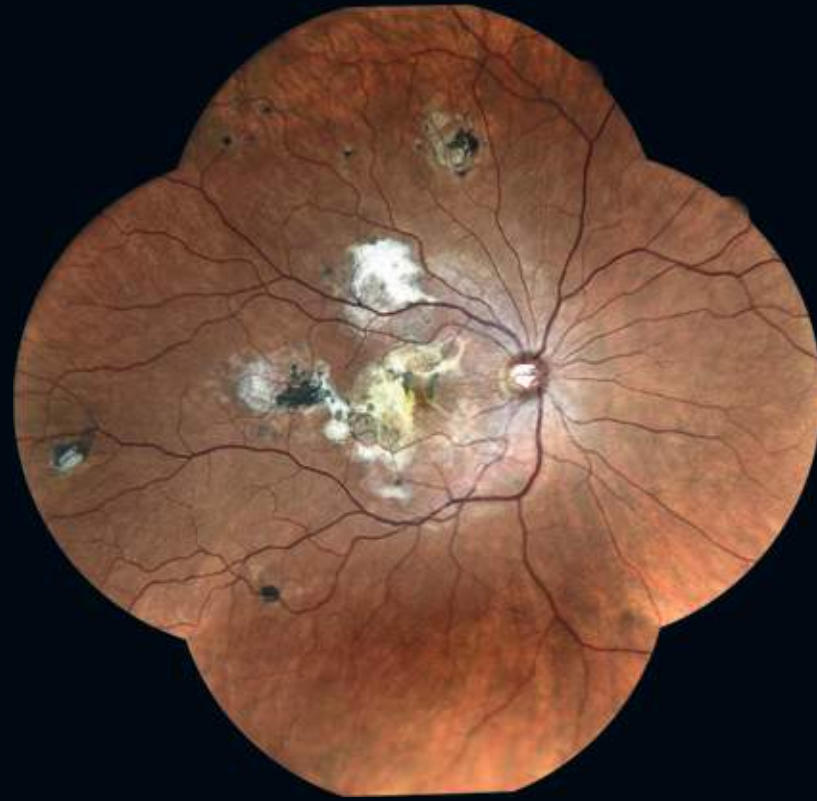
iCare EIDON Family allows a panoramic view of the retina, up to 160°

By using a proprietary stitching algorithm, iCare EIDON Family automatically combines different fields without user intervention, offering unsurpassed image quality, sharpness, and details, from the posterior pole to the periphery.

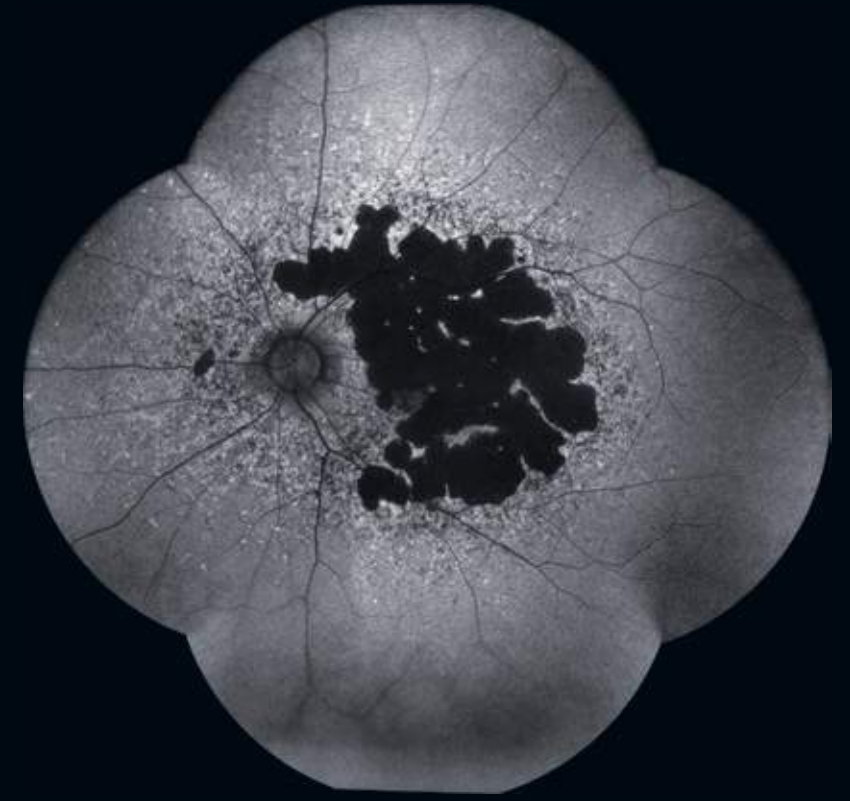


A complete suite of retina images

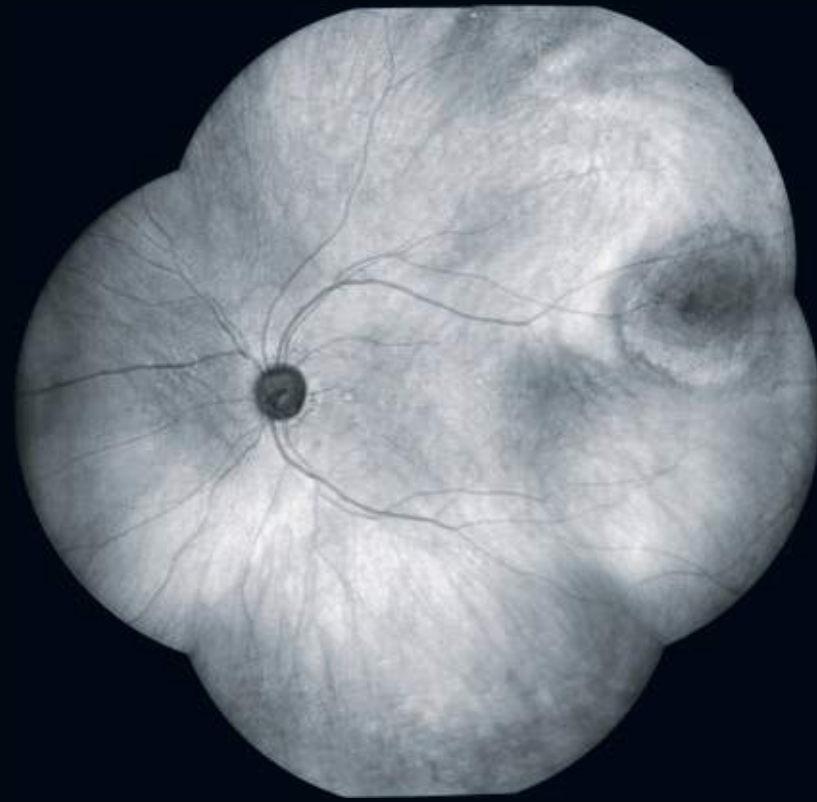
TrueColor
to see the retina with superior color fidelity



Blue Fundus Autofluorescence
to assess the Retinal Pigment Epithelial layer integrity



Infrared
to get information corresponding to the choroid



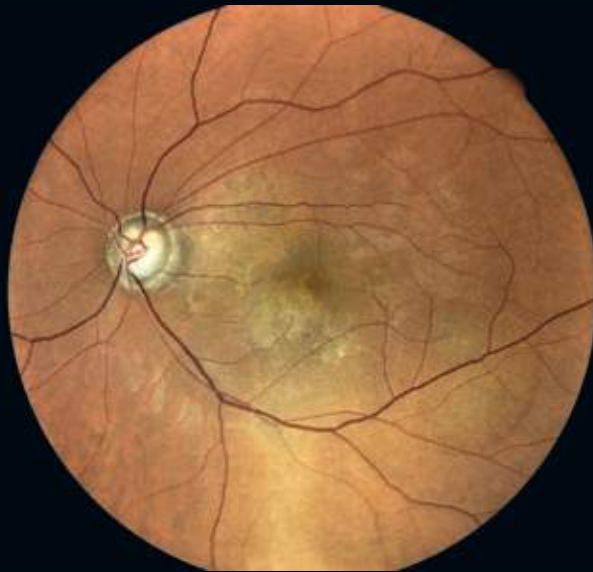
Fluorescein Angiography
to observe and monitor retinal blood flow details



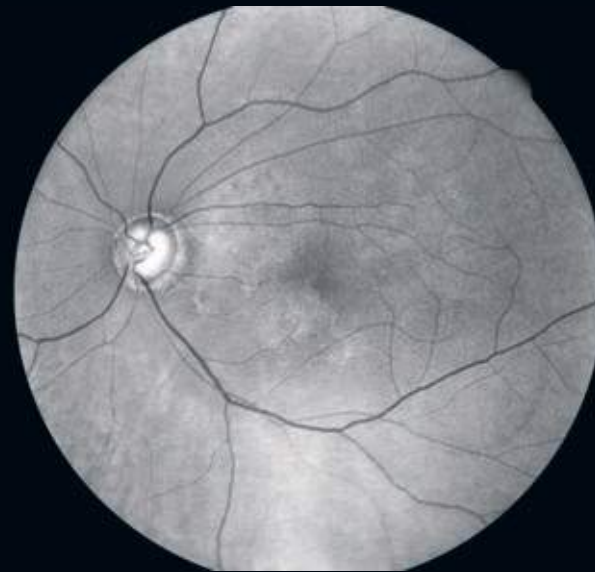
RGB channels separation

iCare EIDON Family TrueColor images can be separated into red, green and blue channel images to enhance the visualization of details on different retina layers.

TrueColor



Red Channel



Green Channel



Blue Channel

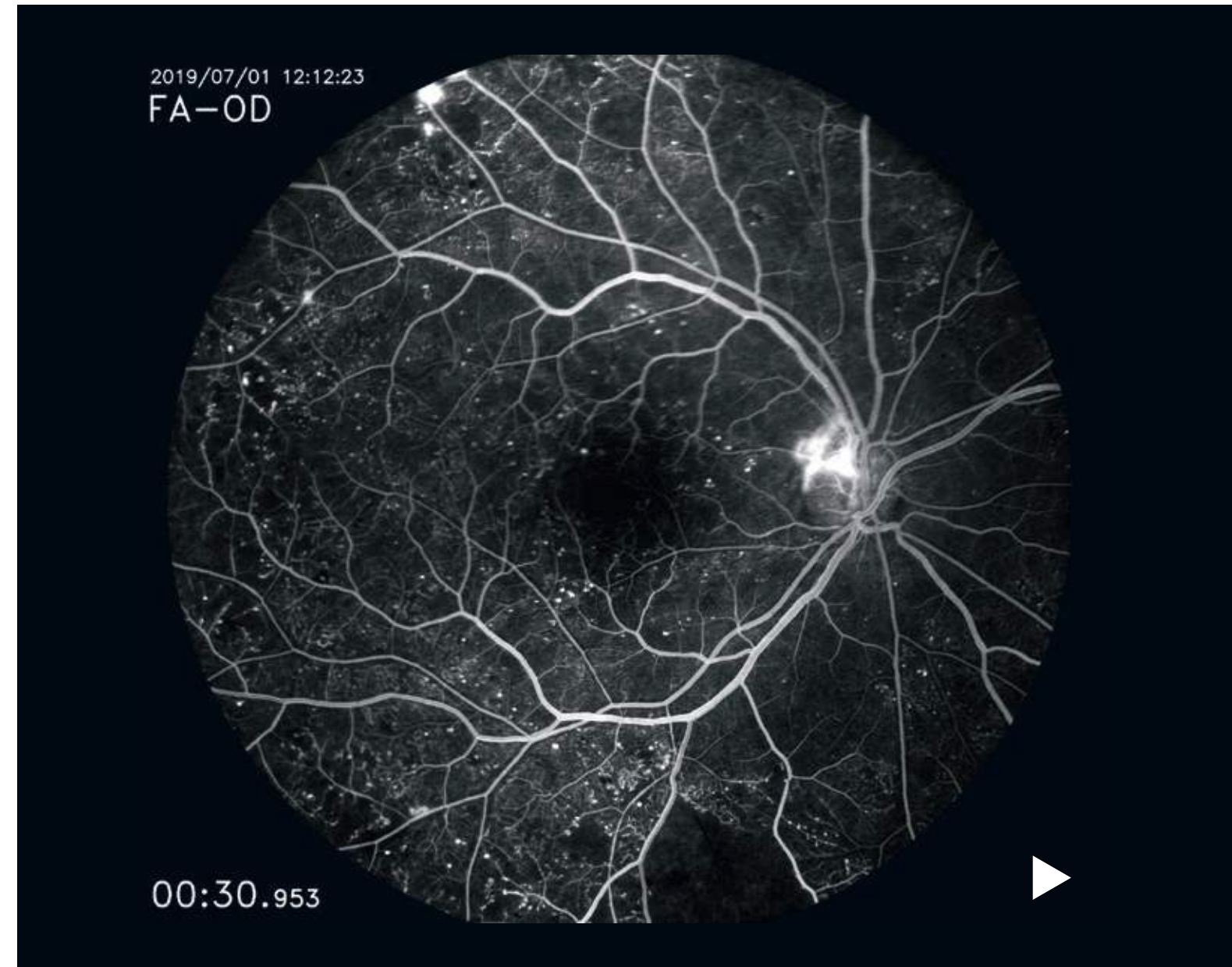


Fluorescein Angiography video provides detailed dynamic view of retina vasculature

The fully automated capability of iCare EIDON FA transforms the overall complex Fluorescein Angiography process in a simple examination requiring minimal operator involvement.

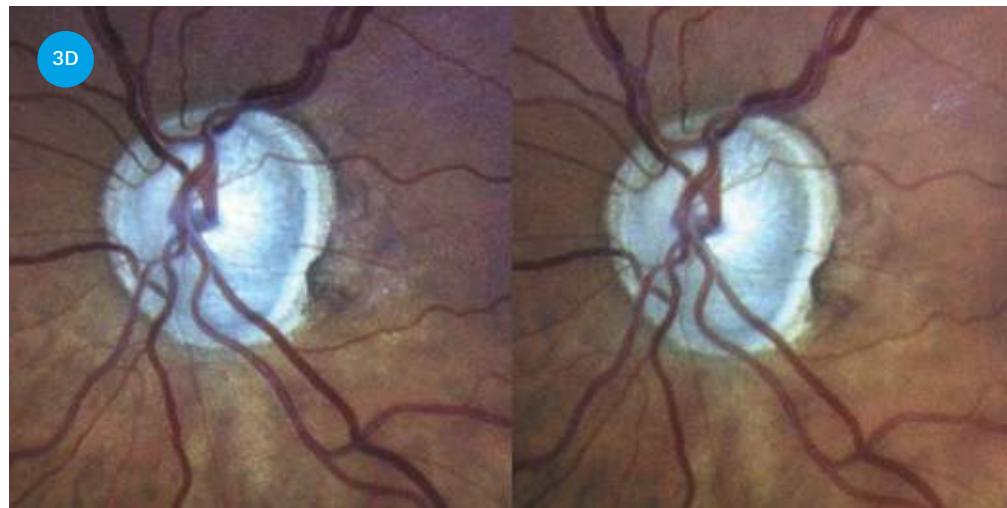
Additionally, the Fluorescein Angiography video acquisition offers a dynamic perspective of retinal vasculature and related circulation mechanisms that may be missed with static photography.

With these functionalities, iCare EIDON FA leaves the operator free to focus attention on ensuring maximum patient care and comfort.



Stereo Viewer Technology

iCare EIDON Family Stereo Viewer Technology automatically captures two separate photos of the nasal field, at different angles and different focal planes (bifocal), creating improved 3D perception of the disc.



Provide your patient with a **comfortable exam experience**

iCare EIDON Family provides the flexibility of going from fully automatic to fully manual operation, requiring minimal staff training and speeding up examination time. With no need for dilation (2.5 mm minimum pupil), iCare EIDON Family promises enhanced comfort to patients, improving everyday workflow.



iCare EIDON Family **Remote Viewer**

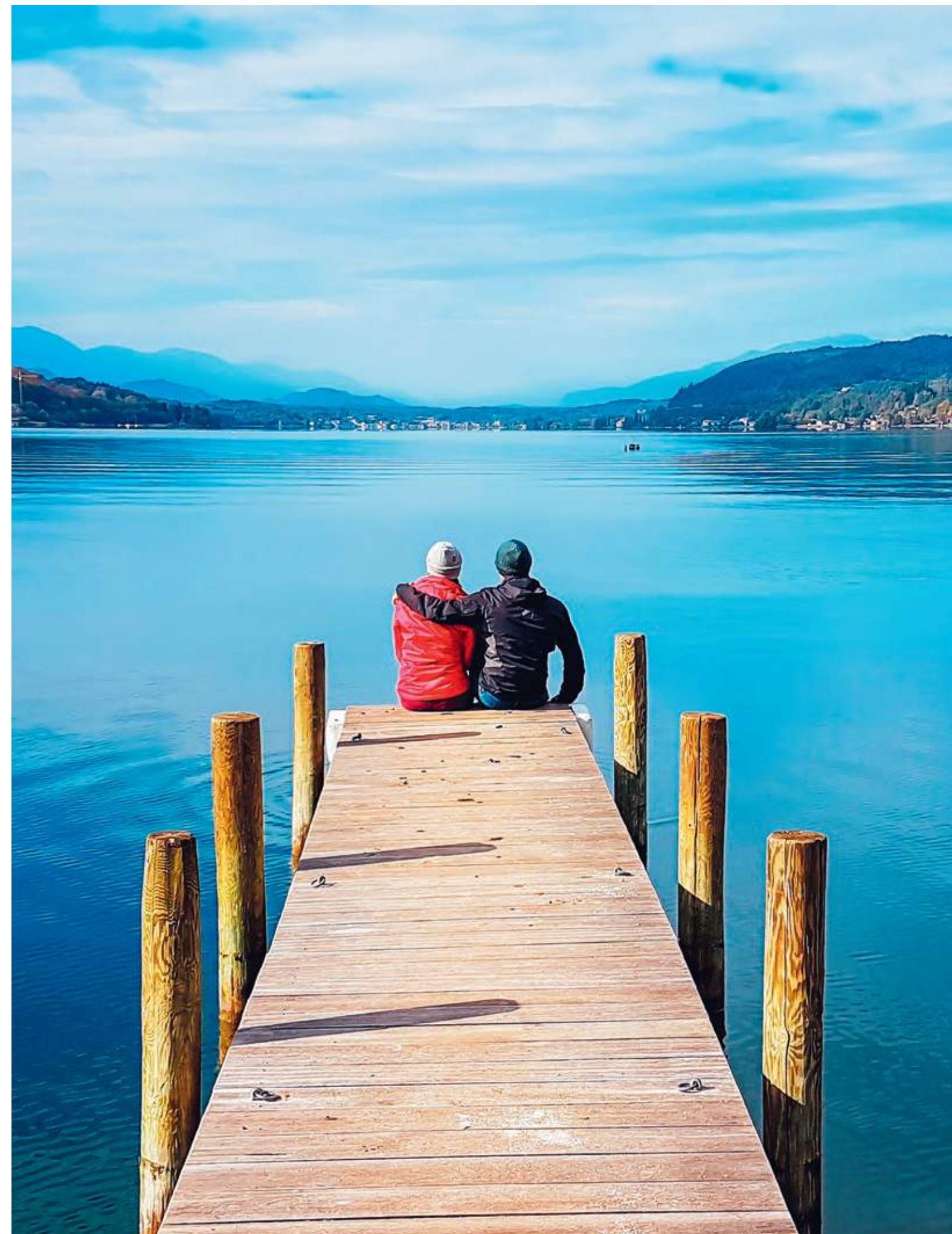
The EIDON Family Remote Viewer is a browser-based software that allows for reviewing from any network computer on the same local area network (LAN), with password protection.



Technical data

	iCare EIDON	iCare EIDON AF	iCare EIDON FA
Fundus Imaging System Features			
Non-mydratic	minimum pupil size 2.5 mm		
Field of View (measured from the center of the eye)			
Individual image	90°		
Mosaic (up to nine images)	up to 160°		
Sensor resolution	14 Mpixel (4608 x 3288)		
Light sources			
White LED (440 - 650 nm)	✓	✓	✓
Infrared LED (825 - 870 nm)	✓	✓	✓
Blue LED (440-475 nm)		✓	✓
Imaging modalities			
TrueColor	✓	✓	✓
Infrared	✓	✓	✓
RGB channels separation*	✓	✓	✓
Fundus Autofluorescence		✓	✓
Fluorescein Angiography			✓
Working distance	28 mm		
Automatic operation	auto-alignment, auto-focus, auto-exposure, auto-capture, Auto-Mosaic		
Auto-focusing adjustment range	-12D to +15D		
Resolution	60 pixel/deg		
Optical resolution on the retina	15 microns		
Pixel pitch	4.9 microns		
Fixation targets	Internal/External		
Dynamic Programmable Internal Fixation Target	Central, Nasal, Temporal, Central-Nasal, Superior, Inferior, Superior-Temporal, Superior-Nasal, Inferior-Temporal, Inferior-Nasal		
FA video resolution	1840 x 1644 pixels		
FA video acquisition rate	5 fps		
Internal computer			
Display	Tablet operated, with multi-touch, color display		
Hard drive	SSD, 480 GB	SSD, 480 GB	SSD, 2 TB
Interfaces	Available ports: USB port x 2, Gigabit Ethernet Port x 1		
Export/Import	jpeg, pdf, DICOM**		
Dimensions/Power supply			
Size (WxHxD)	360 mm X 590 mm X 620 mm / 14.2" x 23.2" x 24.4"		
Weight	25 Kg (55 lbs)		
Related Voltage	100-240 VAC		
Frequency	50-60 Hz		
Power Consumption	80W		
Electrical Class	IEC 60601-1 Class I		

*digital filters
**optional



iCare. For better perception.

iCare is a trusted partner in ophthalmic diagnostics, offering physicians fast, easy-to-use, and reliable tools for diagnosis of glaucoma, diabetic retinopathy, and macular degeneration (AMD). Our product assortment includes automated TrueColor imaging devices, perimeters and handheld rebound tonometers.

We believe that ophthalmic care should be accessible, effortless, and reliable, and we aim to establishing the next level of eye care.



REV02 - 2021-03



Centervue S.p.A.

Via San Marco 9H
35129 Padova, Italy
Ph. +39 049 501 8399
info@icare-world.com

Icare Finland Oy

Äyritie 22
01510 Vantaa, Finland
Ph. +358 9 8775 1150
info@icare-world.com

Icare USA, Inc.

4700 Falls of Neuse Rd. Ste 245
Raleigh, NC. 27609
Ph. +1 888.422.7313
Fax +1 877.477.5485
infoUSA@icare-world.com

www.icare-world.com

icare

For better perception

Centervue S.p.A. is the Legal Manufacturer of EIDON, EIDON AF and EIDON FA. iCare is a registered trademark of Icare Finland Oy.

Centervue S.p.A., Icare Finland Oy and Icare USA, Inc. are parts of Revenio Group and represent the brand iCare.

Not all products, services or offers referenced in this brochure are approved or offered in every market and approved labeling and instructions may vary from one country to another. Product specifications are subject to change in design and scope of delivery and as a result of ongoing technical developments.